



# **"The River Cities Running Board"**



RIVER CITIES MODEL "A" FORD CLUB

<http://www.rivercitiesrunningboard.com>

**VOL 12 ISSUE 10 ESTABLISHED IN 2000 October 2012**

MAFCA AWARD WINNING NEWSLETTER, 2002-2009  
OLD CARS WEEKLY GOLDEN QUILL AWARD 2004, 2010



Inside this issue; The Presidents Corner, September Meeting Minutes, Bentley Bohanan's part 8 on restoring a Model A, Tech tip from Bentley Bohanan, Barbara Ruddick write up on the 2012 club picnic, How many A's were made during production and a How well do you know Ford quiz.

# RIVER CITIES MODEL "A" FORD CLUB

This newsletter is the official publication of the River Cities Model A Ford Club, a chapter of the Model A Ford Club of America. It is mailed monthly to all members in good standing. Dues are \$20.00 per year per family. Membership in the **MODEL A FORD CLUB OF AMERICA** is a requirement for membership in the River Cities Model A Ford Club.

## CLUB OFFICERS:

President  
Vice President  
Secretary & Benevolence  
Treasurer

Al Lugo  
Paul Singer  
Sharon Webb  
Bettie Jackson

## OTHER POSITIONS:

Editor  
Tour Director  
Publicity  
Program Director  
Club Liaison  
Membership Director  
Awards Director  
Historian  
Scholarship Chairperson  
Car Show Director

Bill Shirley  
Jim Langely  
Mickey Timbes  
John Robertson  
Jim Langley  
Jim Miller  
Howard Ruddick  
Mary Nelle Singer  
Connie Penny  
Bobby Penny

**The River Cities Model "A" Ford Club permanent address is:**

**P.O. Box 342, Columbus, GA 31902**

All mail should be sent to the River Cities Model A Ford Club address above. Matters concerning the newsletter should be sent to the editor to insure timely publication.

## FOUNDING MEMBERS:

Jim Timbes Bob Smith Bobby Penny  
Mickey Timbes Al Lugo Robert Jackson  
\*Dan Palmer Lawrence Farrar Bettie Jackson  
Dan Diener Bill Buck (\*Deceased)

## PAST PRESIDENTS:

Jim Timbes - NOV 2000 - DEC 2001, Bob Smith - DEC 2001- 2003,  
Mickey Timbes - DEC 2003 – 2004, Jim Langley- DEC 2004 – 2006,  
Joe Spooner - DEC 2006 – 2008, Jim Langley- DEC 2008 – 2009,  
Jim Timbes - DEC 2009 – 2010, Al Lugo - DEC 2010 - 2011

# The President's Corner..



## October 2012

On September 22, 2012 our Club celebrated International Model A Day by going on a picnic to Howard and Barbara Ruddick's lake cabin. 36 members attended, driving 9 Model A's and a beautiful 57 MGA and Camaro. The weather was perfect, Girlfriends' in Phenix City catered the event and many members made home ice cream and cup cakes. We all had a great time! We thank Howard and Barbara Ruddick's for serving as great host at their great lake cabin and Jim Langley and the Ruddick's for planning this great event.

Thank you also to Jim and Mickey Timbes for volunteering to serve as the Nominating Committee. They have already presented a list of candidates for the four elected positions. Nominee's will be presented during the October Meeting. Nominations can also be made from the floor and club members will vote for their new leaders during the November meeting.

We are very glad to see Don Carlisle out of intensive care and now recovering at the Rehab Hospital in Phenix City.

Thank you to Mike Moye for presenting a great program on "Health" during the September club meeting. His information was very important and beneficial to keep members healthy.

Remember our next Workshop is October 13, and the workshop will be "Timing the Model A". The main instructor will be Russell Lester and the workshop will be at my garage. Members will meet at St. Mark's Church at 9:00 AM leaving to my garage by 9:15. Since lunch will be provided we need a good headcount so contact me if you have not signed up. Due date to sign up is October 5, 2012.

This month we will visit the following Nursing homes and retirement centers:  
September 29<sup>th</sup>: Spring Harbor,  
October 20<sup>th</sup>: River Place  
October 31: Parkwood  
If you need to sign up call Jim Langley or Al Lugo.

See you at the meeting,

Al

# JOIN US!

BY AL Lugo

NEXT MEETING: October 18, 2012-6:00PM  
(EASTERN) Our  
next meeting will be at Woodmen of the  
World Lodge, on Highway 80, in Phenix City.

## COMING EVENTS

September 29	Spring Harbor Retirement & Nursing Home Visit
October 5	Board Meeting
October 6	LaGrange Car Show
October 6	Mt. Zion Car Show
October 13	Workshop: Timing the Model A Ford
October 18	Club Meeting
October 20	River Place Nursing Home Visit (2-5 PM)
October 26	Sweet Home Alabama Tour (Individual participation)
October 27	Buena Vista Car Show
October 31	Parkwood Nursing Home Visit (11:30 PM -1:30 PM)
November 3	Tour to Harvest Days in Old Talbot
November 9	Board Meeting
November 10	Plains Veterans Day Car Show
November 15	Club Meeting (elections)
<u>CRUISE EVENINGS</u>	
Every 1 <sup>st</sup> Tuesday-	Cooks Hot Dog on Miller & Airport Thru Way
Every 2 <sup>nd</sup> Tuesday	La Pareja Mexican Restaurant (towards Waverly Hall)
Every 3 <sup>rd</sup> Tuesday	Jason Deli
Every 4 <sup>th</sup> Tuesday	Cooks Hot Dog on Miller & Airport Thru Way
Every 2 <sup>nd</sup> Saturday	Opelika Home Depot
Every 4 <sup>th</sup> Saturday	Steak and Shake (Bradley Park Drive)

### NATIONAL:

December 9-12-MAFCA National Awards Banquet, Charleston, SC

River Cities Model A Ford Club  
Meeting Minutes  
September 20,2012

Opening:

The regular meeting of The River Cities Model A Ford Club was called to order at 6:00 pm on September 20, 2012 at the Woodman of The World Lodge by President Al Lugo. He then led the group in The Pledge of Allegiance. The blessing was given by Joe Spooner and all proceeded to the buffet.

Present: Paul and Mary Nelle Singer, Al Lugo, Jim Langley, Dick Noxon, Joe and Donna Carter, Michael Moye, Roger and Janet Bailey, Bob Shackelford, Bobby & Connie Penny, John Robertson, Bob Smith, June and Joe Spooner, Benny Reddish, Rex Reddish, Bettie and Bob Jackson, Mickey and Jim Timbes, Russell Lester, Mike Alexich, Howard Ruddick, Bill Shirley and Sharon Webb.

Call to Order: The meeting was called to order by President Al Lugo at 6:30pm. Glen's sister is ill and he and Cindy had to go out of town to see her. David Black's final surgery is scheduled for this Friday. Don Carlie is out of ICU at Rehab at Phenix City room 206. Visiting hours are from 8a-8p.

Program: Mike Moye presented a recap of the Health Program he gave earlier this year. He was able to show the slides he was unable to show at his earlier presentation. He had many historical pictures of people working and exercising in the early 20's and 30's. He also showed some very disturbing statistic regarding the "fattening" of America. Over the years we have become more sedentary and obese. How can we fight obesity: Improve eating, exercise walk 6 hours per week,, and eat less than 500 calories per week. Find things you enjoy doing and do them with someone, for emotional support.

Approval of Minutes: Al Lugo asked if there were any additions or corrections to the Secretary's minutes as printed in the newsletter. Paul Singer made a motion to accept the minutes as written. Jo Spooner seconded the motion. The motion was approved by show of hands. Treasurers Report: The treasurer's report was read by Bettie Jackson. Bob Smith made a motion to approve the treasurer's report. John Robertson seconded the motion and the members unanimously approved by a show of hands.

Show and Tell: Sharon showed some old tools and a Model T Jack. They were passed around for all to see. I shared my appreciation to Paul Singer and other club members who helped get the Pheonix all fixed up. He is running like a top now and I am planning on going on the big trip scheduled for the Blue Ridge Mountains by the MAFCA. Jo and June Spooner shared the trip they took to the scenic City Model A tour. They shared many great stories and beautiful pictures. They encourage all the

members to participate in these tours sponsored by the National clubs.

Old Business: The club picnic is scheduled for Sept 22, 2012 at Howard and Barbara Ruddricks Lake Cabin. We are asking those who are attending to meet at the Glenwood School at 10 and we all leave as a group at 10:15 am. 39 folks have signed up for the picnic which is going to be catered by Girlfriends. Everyone knows what they are bringing and we all need that it needs all of us working together to make this a success. Remember this is International Model A Day, so don't forget to drive you're A!

New Business: Big Thank You to Mickey and Jim Timbes for volunteering to serve in the Nomination Committee. Nominations will be presented AT THE October meeting and we will vote at the November meeting. The Club Sweatshirt update by Bobbie Penny was that the round neck was \$25, hoody \$30, hoody with a zipper \$35. There is a minimal order of 12. Spring Harbor is scheduled for September 29, 2012 at 10:00 am. Lunch will be served and a head count must be taken tonight. Remember the Workshop that is scheduled for Oct 13, 201. Other activities scheduled the remainder of the year are: October 5 Board Meeting, October 6 La Grange Car Show, also on Oct 6 is Mt Zion Methodist Church Car show. October 13 Workshop is Timing the Model A Ford to be held at Al's Garage, River Place Nursing Home Oct 20, Oct 27 Buena Vista Car Show, November 3 Tour to Harvest Days in Old Talbot, November 10 Plains Veterans Day Car Show, Tri-City Christmas Parade, and Dec 20 Club Christmas Party & Annual Business Meeting.

Reports from Committee Chairpersons:

Secretary: we need some more masculine cards for speedy recovery.

Programs: Nothing to report

Publicity: Nothing to report

Historian: Nothing to report i

Scholarship: Not present

Membership: Nothing to report

Awards: Nothing to report

Mechanics: Nothing to report

Vice President: Nothing to report.

Newsletter: Be sure to submit your articles of interest!

Tour Director: Stay tune for updates on all discussed

Adjournment:

Meeting was adjourned at 7:45pm at the motion of Howard Ruddick and seconded by Bettie Jackson.

Minutes submitted by: Sharon Webb

"Coming together is the beginning. Keeping together is progress. Working together is success."

— Henry Ford

Board nominations are right around the corner so start thinking, could you do one of the jobs? Sure you can.

Mrs. Bettie Jackson, club treasure, would like someone to step up now so Bettie can devote more time to her Husband and his rehab.

The web site for the MARC and more information about their event go to <http://modelarestorers.org> for more information. Last year, in April, they had 227 Model A's and over 500 folks attend the Natchez Trace tour.

**2013 MAFCA National Tour May 6-10**

Charlottesville, VA to Gatlinburg, TN

[www.mafcablueridgetour.com](http://www.mafcablueridgetour.com)

## HAPPY ANNIVERSARIES

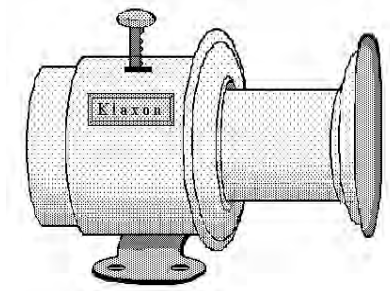


**OCTOBER 19- Joe & June Spooner**

**OCTOBER 24- Harry & Sherry Williams**

Belated Anniversary Announcement For **Roger & Janet Bailey AUGUST 1**

## HAPPY BIRTHDAYS



**OCTOBER 1- Bob Smith**

**OCTOBER 11- Jim Miller**

**OCTOBER 14 – Jim Timbes**

**OCTOBER 24- Carolyn Shackelford**

**OCTOBER 31- Harry Williams**

**OCTOBER 3- Lizbeth Lugo**

**OCTOBER 12- Bill Buck**

**OCTOBER 22- Evelyn Carlisle**

**OCTOBER 28- Neil LaClair**

Belated Birthday Greeting To **Janet Bailey AUGUST 31**



## Let's Restore a Model A Ford, Part 8, The Chassis

Our project Model A is coming along nicely. This Month we'll final assemble the chassis. We'll look at the original procedure Ford used at the assembly plant, and try to follow along at home. Keep in mind, we're using the book: "Les Andrews Model A Mechanics Handbook, Volume 1" for detailed instructions. These articles are just a guideline to keep us moving forward.

Since we have completely restored the frame, and springs, lets look at what it takes to assemble our chassis. At the Ford assembly plant, the rear end with axles and brakes, along with the front axle with brakes, would have been assembled in separate areas. So it makes you wonder how everything got painted, and how it would all look if we did it the way Ford originally did. Of course, Ford built almost 5 million Model A's, so they had a pretty good routine to go by. The engineering department went to a lot of trouble to figure out how to build the cars quickly and efficiently. Of course the cars have lasted 80 plus years, so they also had qfality built right in.

Almost all of the chassis components were painted before final assembly. Some of the parts were dipped in black enamel, such as brackets and solid parts. Larger assemblies could not be dipped, such as the rear end and front end, because paint would get inside the assemblies, or inside bushings and cause prblems. These assemblies were sprayed with black enamel. The frame itself was painted with "Chassis Black" which was kind of like roofing tar. It was very resistant to water and moisture, but could be washed right off with gasoline or other solvents.

As the frame moved down the assembly line (upside down), the rear end assembly, with the spring and brakes installed, was dropped into place. Workers would install the bolt assemblies and tighten all the bolts. At the same time the front axle was dropped into place, again with the spring, king pins, linkages, and all brakes already in place. Again, remember the front axle assembly and rear axle assembly were painted ahead of time. While this was going on, other workers installed the running board brackets, motor mounts, engine pans, shocks and shock arms. After the chassis was assembled, workers would pray the whole outfit with black

pyroxylin enamel. This step was to insure that everything on the chassis is painted.

Next, the chassis was flipped right-side-up, and continued down the assembly line. The engine and transmission was also pre-assembled in a different area of the factory, and painted the samiliar engine green. After the engine and transmission were dropped into place, and bolted up, another worker would come along and touch up any areas where =he paint may have been damaged during assembly.

Moving down the line, the wheel/tires, radiator, bumpers, steering gear, muffler, battery box, and battery would have been installed. Then all the lubricants, and water would be added.

We can follow this procedure with our own project at home. First, we'll assemble the front and rear ends, and spray paint the assemblies with black enamel. We can follow Ford and paint the frame with "Chassis Black", which is still available at auto parts stores, or paint the frame with black enamel. After all the assemblies are painted, we can start bolting everything in place. You can pre-paint all the brake rods and brackets, then bolt or rivet them in place. Keep some touch up paint close, in case you nick the paint during assembly, like Ford did.

Now drop your engine and transmission into place. Now battery box, battery, cooling system, lubricants... Wow, this is really coming along nicely! I'm starting to think about driving our newly restored Model A. Maybe soon!

See you in the Shop!  
Bentley C. Bohanan  
[www.mymodela.com](http://www.mymodela.com)

Did you Know that Henry Ford's first attempt at a car company under his own name was the Henry Ford Company on November 3, 1901, which became the Cadillac Motor Company on August 22, 1902 after Ford left with the rights to his name?

**All Model A & Early Ford V-8 Swap Meet.  
Lebanon, Tn.  
(Outside Nashville, TN) Saturday November 3rd.**

**Vendor Rates:**

**\$30 indoors. Tables (8 Ft.) available for rent at \$8 but must be reserved in advance as they come from an outside source. Venders can bring their own tables. Open for business at 7 am. Saturday, until?? (One Day Only)**

**\$20 Outside Space.**

**There will be no limits on space within reason.....**

**Friday Set Up 3-8 PM. Set Up Saturday 6 AM.**

**I will have a vendor sheet with all details out the first week in Sept. I am going to Lebanon Tuesday 10-28 to set everything up. Motel, etc.**

**Buyer admission: \$5.00 Proceeds to New MAFFI Model A Museum. Vendors are asked to bring one (1) Model A Item for the MAFFI museum Booth.**

**Additional Items are welcome.....**

## **MARC NATIONAL MEET**

**Lexington, Kentucky will be the site of the 2013  
National Meet of the Model 'A' Restorers Club June  
24-28, 2013**

**[www.ckmarc.com](http://www.ckmarc.com)**

## Thomas Edison and a 1928 Model A

Henry Ford gave Thomas Edison Model A #1 in 1928. The car was a Tudor Sedan rebodied with a Phaeton body before Ford gave it to Edison.

In this photo is Thomas Edison at the wheel of a new '28 Tudor Sedan. Edison preferred open cars as his conveyance of choice, but it looks like he had no problems with this Sedan!



"Failure is the opportunity to begin again more intelligently."

— [Henry Ford](#)

During the War between the States when the Union forces were moving through the South the dogs would bark thereby drawing attention to the houses. In order to keep the dogs quiet the country folks would take them into the woods and give the dogs choice morsels of corn pone saying, "HUSH PUPPIES."

## INTERNATIONAL MODEL "A" DAY

Saturday, September 22, 2012

By: Barbara Ruddick

On Saturday, September 22, the River Cities Model "A" Ford Club celebrated International Model "A" Day by driving their vintage cars to Lake Harding for a picnic at the cabin of Howard and Barbara Ruddick. On International Model A Day owners all over the world were

After lunch Mr. Virgil (Turtle) Clark, of Huguley, invited the group to come to his lake camp just down the road from the Ruddick's to see some of his antiques and projects. Mr. Clark and his brother, Jeff, have built a working waterwheel, a small covered bridge, and a replica of an old country store. Members had their pictures taken with their vintage cars "pumping gas" from an antique Mobil oil gas pump and in front of the covered bridge. On the front porch of the "country store" sat an old Coca Cola cooler and an old washtub and wash board. By the porch was a vintage child's tricycle. The "country store" had many antique signs displayed on the outside just as they would have been in the 1920's and '30's. The old time setting gave a real feeling of yesteryear. It was a perfect ending to a fun filled international Model "A" Day.

Members of the club from Wes Point are Howard Ruddick and Russell Lester.



Bill driving up to the gas pump after crossing the covered bridge. Gas was only \$.19 per gallon at this station.





Howard headed up to the country store to buy some juicy fruit gum and pay for his gas.



Paul filling up his A at the country store



View of the water wheel across the lake

Some of the club members staying cool

More pictures of the picnic are available on the web site

Registrations for the Sweet Home Alabama Tour October 19-20, 2012 are getting off to a quick start. We have 31 registered from 4 states (Alabama, Georgia, Kentucky, and South Carolina) 15 Model A's and more are on the way.

Now is the time to make your hotel reservations and send in your registration form. The number for the Holiday Inn in Huntsville is: Main desk (256)533-1400, Reservations (256) 465-4329.

When making reservation ask for the "Antique Car Group" to get the special room rate of \$89. The block of rooms will be released on September 18, 2012 so call now. This is going to be a great club tour and one you do not want to miss. Registration form is on the web site.

**The chick**

**He wed**

**Let out a whoop**

**Felt his chin and**

**Flew the coop**

The logo for Burma Shave, featuring the brand name in a stylized, white, serif font. The text is set against a dark red background. Below the text is a white, stylized graphic of a shaving brush or a similar object, pointing to the right.



- **Just how many "Model A's" were made during the production period?**

The Model A Production started on Oct. 20th, 1927. By Feb. 4th, 1929 Model A, No. 1,000,000 rolled off the production line. Final production ended on Aug. 31st, 1931 with **4,320,446**. The chart below show quantities and styles during production years of the Model A (1928-1931).

<b>Body Style</b>	<b>Standard</b>	<b>Deluxe</b>	<b>Total Produced</b>
Sport Coupe	302,135	-----	302,135
Phaeton	117,849	6,175	184,024
Roadster	392,135	64,315	456,450
Coupe	556,238	52,004	608,242
Tudor	1,259,128	21,984	1,281,112
Town Car	-----	1,065	1,065
Station Wagon	11,317	-----	11,317
Taxi Cab	4,850	-----	4,850
Fordor (2 windows)	233,725	16,105	249,830
Business Coupe	74,987	-----	74,987
Fordor (3 windows)	113,201	245,374	358,575
Convertible Cabriolet	54,090	-----	54,090
Convertible Sedan	4,864	-----	4,864
Trucks Commerical Chassis	482,850 264,986	----- -----	482,850 264,986

**There are only two types of cars in the world. It is either a Ford or it's not. So how well do you know Ford?**

**#1 Ford incorporated the Ford Motor Company in:**

- A. 1900
- B. 1905
- C. 1910
- D. 1903
- E. 1912

**#2 The Model T was invented in:**

- A. January 1905
- B. June 1907
- C. October 1908
- D. December 1909
- E. August 1906

**#3 The Model A was first sold on:**

- A. January 5, 1927
- B. October 20, 1927
- C. December 2, 1927
- D. October 20, 1928
- E. December 2, 1928

**#4 The Ford V-8 was originally marketed as a:**

- A. Model 18
- B. Model 8
- C. Model 80
- D. Model 88
- E. Model 800

**#5 Henry Ford said "You can**

- A. As long as it's white
- B. As long as it's shiny
- C. As long as it's black
- D. As long as it's bright

**#6 Henry Ford was the son of a:**

- A. Blacksmith
- B. Banker
- C. Farmer
- D. Doctor

**#7 It originally took \_\_\_\_ hours to assemble the Model T.**

- A. 24
- B. 14
- C. 48
- D. 36
- E. 72

**#8 Henry Ford paid his employees:**

- A. 3 dollars a day
- B. 3 dollars an hour
- C. 5 dollars a day
- D. 5 dollars an hour

**#9 Ford also had a hand in the development of:**

- A. Radio
- B. Aerosol can
- C. Astroturf
- D. Charcoal briquettes
- E. Bakelite

**#10 Henry Ford died in:**

- A. 1951
- B. 1945
- C. 1947
- D. 1955

## **Model A Q&A's**

**Oh Boy, what a busy time in the shop.** I am always very thankful for the work in the shop, all my good customers, the great weather we have been enjoying and just the blessings of having a great job that I enjoy doing. Working on Model A Ford's! What could be better. Every day I get visitors, E-mailers, and phone callers with questions for me about their Model A's. Here are some questions and answers that I have received in the past few weeks, that I thought might be of interest to other enthusiasts.

**I have whitewall tires on my Model A Ford. What cleaners should I use to keep them shiny and new?** To make a short story very long... We just got back from the National Tour in Chattanooga, where I had the opportunity to tour the Coker Tire company. They have a big collection of classic cars and motorcycles, many of them wearing wide whitewall tires. Coker sells a specially formulated whitewall cleaner called "Wide White" for only \$5.95, which promises to keep your whitewalls "Snowy White". Go to [www.cokertire.com](http://www.cokertire.com) and search for whitewall cleaner. I personally have used Wesley's Bleach White, available at Wal-mart. Tough stains get some scrubbing with a SOS pad. Do not use petroleum solvents, paint thinner, or other harsh chemicals!

**What is my Model A worth if I decide to sell it?** The classic answer is a price that you are willing to accept, and that someone else is willing to pay. It seems to me that the Model A market is down somewhat, although the collector car market in general is alive and well. Just watch some of those televised auctions and see what those cars are going for. To get a realistic idea, spend some time browsing the internet to see what cars are selling for. Be careful not to confuse the "Asking Price" for the "Selling Price". Pick out some cars similar to yours on Ebay, and click to "Watch this item". This will allow you to follow the action all the way to the end, and see the actual selling price. Be realistic about your price. Although you may have owned the car since it was restored, and you still think of it as being in excellent condition, years of time and use may have brought it down a couple of notches. I have helped sell several Model A's at my shop, and usually the buyers and sellers end up happy.

**My wife slammed the door, and the window cracked... now what?** First of all, for the sake of all that is harmonious, do not blame it on your wife! There really is no reason the glass should have cracked just because the door was closed. Look down inside the door, and see if you see a screw, or piece of metal that may have come in contact with the glass. With some detective work, you should be able to find out what caused the problem. Be sure to repair the problem before replacing the glass, or it will break again. Remove the glass from the door very carefully, wearing leather gloves. Usually there is some trim to be removed to allow the glass to be taken out. Any glass shop should be able to copy the glass to the correct dimensions. Be careful about finding dimensions on the internet, they are usually wrong. When the new glass is ready, 3 edges will be polished, Be sure to put the unpolished edge down into the bottom of the

door. Use glass bedding tape to hold the glass in the lower channel. Do not use JB Weld, or other epoxy. The Glass bedding will hold it fine. When everything is reassembled, test it by rolling it up and down. Then take your wife out for a nice meal.

Enjoy the Drive...

**Bentley C. Bohanan**  
**Bentley's Antique Auto Service, Inc**  
95 W Ridgeway Rd  
Maysville, GA 30558  
phone 678-407-1947  
website [www.mymodela.com](http://www.mymodela.com)  
email [bennypam@windstream.net](mailto:bennypam@windstream.net)

Barn (field) finds can come to life



Before



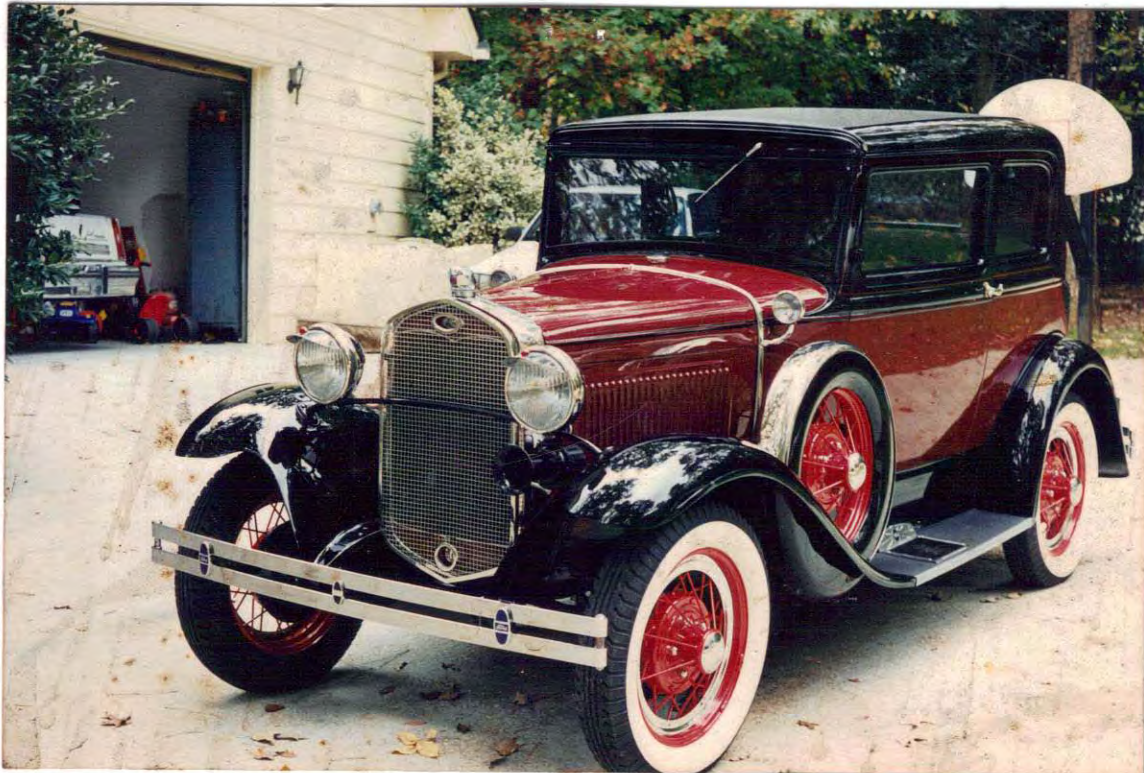
After

## Cars For Sale

### 1931 Ford Model A Victoria

Rare, black and burgundy Ford Model A Victoria. Much loved and fun car. It runs great, has new battery and is in mint condition. Has good upholstery, flower vases, pull shades, cut off switch, turn signals and leather trunk. Great touring car.

Asking \$26,000. Atlanta, Ga, Wayne Haisten, [haistenrw@aol.com](mailto:haistenrw@aol.com). Phone 678-513-0668.



1930 four door phaeton, 35,000 original miles  
unrestored car. Original top,door panels. No rust.  
\$22,000.00.

A 1931 slant windshield good car 90 % original  
interior no rust \$18,000.00.

Contact Tom Mack 513-922-5551

Answers to the quiz

D, C, C, A, C, C, B, C, D, C.