



"The River Cities Running Board"



RIVER CITIES MODEL "A" FORD CLUB

<http://www.rivercitiesrunningboard.com>

.....
VOL 15 ISSUE 1 ESTABLISHED IN 2000 JANUARY 2015
.....

**MAFCA AWARD WINNING NEWSLETTER, 2002-2009, 2011 and
2013**

OLD CARS WEEKLY GOLDEN QUILL AWARD 2004, 2010



Visit our Web site at www.rivercitiesrunningboard.com

RIVER CITIES MODEL "A" FORD CLUB

This newsletter is the official publication of the River Cities Model A Ford Club, a chapter of the Model A Ford Club of America. It is mailed monthly to all members in good standing. Dues are \$25.00 per year per family. Membership in the **MODEL A FORD CLUB OF AMERICA** is a requirement for membership in the River Cities Model A Ford Club.

CLUB OFFICERS:

President
Vice President
Secretary & Benevolence
Treasurer

Joe Spooner
Bob Smith
Connie Penny
Joe Carter

OTHER POSITIONS:

Editor
Assistant Tour Director
Publicity Director
Program Director
Club Liaison
Membership Director
Awards Director
Historian Director
Scholarship Director
Car Show Director

Bill Shirley
Jim Langley
Sharon Webb
John Robertson
Jim Langley
Al Lugo
Bobby Shackelford
Mary Nelle Singer
Bill Shirley
Bobby Penny

**The River Cities Model "A" Ford Club permanent address is:
P.O. Box 342, Columbus, GA 31902**

All mail should be sent to the River Cities Model A Ford Club address above. Matters concerning the newsletter should be sent to the editor to insure timely publication.

FOUNDING MEMBERS:

*Jim Timbes
Mickey Timbes
*Dan Palmer
Dan Diener

Bob Smith
Al Lugo
Lawrence Farrar
Bill Buck

Bobby Penny
*Robert Jackson
Bettie Jackson
(*Deceased)

PAST PRESIDENTS:

Jim Timbes NOV 2000- DEC 2001
Mickey Timbes DEC 2003-2004
Joe Spooner DEC 2006-2008
Jim Timbes DEC 2009-2010
Paul Singer Dec 2013-2014

Bob Smith DEC 2001- 2003
Jim Langley DEC 2004 -2006
Jim Langley DEC 2008- 2009
Al Lugo DEC 2010-2012
Joe Spooner DEC 2015

Pres. Rattles for Jan 2015

Thanks to Paul's leadership, we had two good years – I look forward to a great year in 2015. I hope all of you had a super Christmas and Happy New Year! That was a fun and entertaining Christmas Party we had – I think it was enjoyed by all!

Let's keep Mary Lester in our thoughts as she recovers at the Roosevelt Warm Springs Rehabilitation Hospital.

Remember – this is your club and it will be what you make it. I look forward to input from each of you. You have a fine group of officers and committee chairmen to work with. I hope each member will find a place on one or more of the committees in which you can contribute to the enjoyment of the club.

We will continue meeting at Woodsmen of the World Lodge and being treated to great dinners by Robert during 2015.

Remember the activities of the club are for the enjoyment of our Model "A" hobby. You can make it whatever you want it to be. So let's get our "A's" out and have a good year in 2015.

If it says "Ahooga", drive it!

Joe



JOIN US!

BY AL Lugo

NEXT MEETING: January 15, 2015-6:00PM
(EASTERN) Our
next meeting will be at Woodmen of the
World Lodge, on Highway 80, in Phenix City.

COMING EVENTS

January 2	MATTS Gathering
January 9	Board Meeting
January 10	Falls City Region Swap Meet, Shepherdsville, KY
January 15	Club Meeting
February 6-8	Moultrie Swap Meet
February 6	MATTS
February 13	Board Meeting
February 19	Club Meeting
February 28	Jordan High School Car Show

CRUISE EVENINGS

Every 1 st Tuesday-	Cooks Hot Dog on Miller & Airport Thruway
Every 2 nd Tuesday	La Pareja Mexican Restaurant (towards Waverly Hall)
Every 3 rd Tuesday	Jason Deli
Every 3 rd Thursday	Harley Davidson on Williams Road
Every 4 th Tuesday	BoJangle's on Schomberg Road
Every 5 th Tuesday	Stevie B's Airport Thruway
Every 2 nd Saturday	Opelika Home Depot
Every 4 th Saturday	Steak and Shake (Bradley Park Drive)
Every Sunday AM	IHOP Airport Thruway

NATIONAL:

June 7-12	MAFCA National Tour: Lobsters & Lighthouses of Maine
December 3-5	MAFCA National Awards Banquet- Medford, Oregon

**River Cities Model A Ford Club
Meeting Minutes from 18 December, 2014
Club Meeting**

The December meeting of the River Cities Model "A" Ford Club took place December 18, 2014 at the Woodman of the World Lodge at 6:00 P.M. Members present were: Rickie and John Robertson, Bob and Connie Penny, Tommy and Sharon Ellis, Bob Smith, June and Joe Spooner, Bettie Jackson, Mickey Timbes, Kevin Adams, Howard and Barbara Ruddick, Dick Noxon, Al and Lizbeth Lugo, Paul and Mary Nelle Singer, Jim Miller, Wayne Kennedy, Neil La Clair, Glen Williams, Cindy, Sharon Webb and Joe and Donna Carter.

President Paul Singer led the group in the pledge and Joe Carter said the blessing. All proceeded to the buffet. After a delicious meal Robert was presented with a check from the club as a token of our appreciation for all the good meals he provides us with during the year. Glen Williams was wished a Happy Birthday by the members. Under the weather members include Carolyn Shackleford who is in the hospital and Pat Langley who is recovering at home from surgery. Our prayers and good wishes for a speedy recovery go out to them.

A motion by John Robertson and seconded by Al Lugo that the minutes from November be approved. Motion passed.

Treasurer's report was given by Joe Carter. Bettie Jackson to audit the books beginning the year.

President Singer presented Recognition certificates to members who were absent from the November meeting. Connie Penny, Secretary, Mary Nell Singer, Historian and Howard Ruddick outgoing Vice President. Presidents award went to Joe Spooner, Jim Langley, Al Lugo and Bobby Penny.

Bob Smith, Connie Penny, Joe Carter and incoming President Joe Spooner were installed as new officers for 2015. Bob Smith, Vice President, Connie Penny, Secretary and Joe Carter Treasurer.

Joe Spooner presented outgoing President Paul Singer the quail trophy. Dick Noxon presented the Road runner award to Paul Singer. This award is to honor the driver who has driven his model A the most miles in 2014.

Outgoing President Paul Singer thanked all the members for their support and efforts to the club and to him.

Meeting was adjourned.

Connie Penny, Secretary

“A door is what a dog is perpetually on the wrong side of.”

Ogden Nash American poet (1902-1971)

Here is a little something for the grey matter:

<http://www.jigidi.com/solve.php?id=Z67MTY7H&s=e>

Life is a puzzle. Make sense - solve the puzzle! Go to the above site and hold down control and left click your mouse.

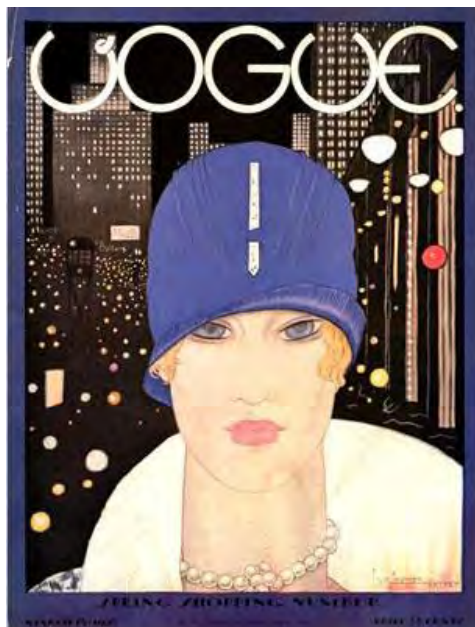
Jan 1st 1927 - The **1927 Rose Bowl** matched two of the nation's unbeaten and untied **college football** teams, with the **Stanford Indians** (10-0-0) against the **Alabama Crimson Tide** (9-0-0). Stanford led, 7-0, until the final minute, when Alabama blocked a punt, recovered the ball on the 14, and nullified the victory with a 7-7 tie.

Jan 1st 1928 - 1st US air-conditioned office building opens, San Antonio

Jan 1st 1929- Roy Riegels runs 60 yds the wrong way with Rose Bowl fumble recovery

Jan 1st 1930 - Jurgens & Van den Berg merge with Lever Brothers to form Unilever

Jan 3rd 1930- Nels Stewart of Montreal Maroons scores 2 goals in 4 sec (record)



Club Christmas party 2014

Photos by Barbara Ruddick and Al Lugo







Paul and Al delivering the toys from the Party to the Salvation Army



"You say I started out with practically nothing, but that isn't correct. We all start with all there is, it's how we use it that makes things possible."

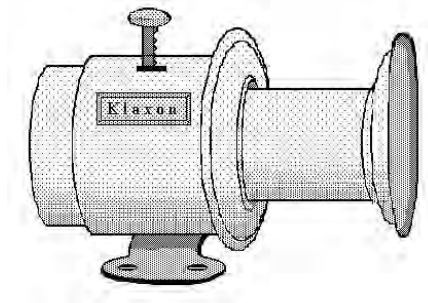
— Henry Ford

HAPPY ANNIVERSARIES



JANUARY 1- Don & Evelyn Carlisle
JANUARY 3- Jim & Pat Langley
JANUARY 15- Burton & Maxine Williams

HAPPY BIRTHDAYS



JANUARY 2- Donnie Morrison
JANUARY 15- Joy Whitaker
JANUARY 19- Bob Durfy

JANUARY 24- Mike Alexich
JANUARY 27- Darlene Adams

HISTORY

Ford Trucks

The Model A Years 1928-1931

Author: Paul McLaughlin

In June of 1927 Henry Ford did something some people thought they would never see him do. Soon after producing his 15,000,000th Model T, Henry Ford ordered production ceased and he shut down all of his plants to retool for his new Model A. Though some had hoped this shutdown would only last a couple of months, to their chagrin it would take almost 6 months before Henry thought his Model A was ready for to be introduced to the public on December 2, 1927.

For pickup buyers the only Model A pickup available, at least at first, was an Open Cab type. It featured a new styled body provided to Ford by Briggs Manufacturing. It also used a soft top that was non-retractable that used side curtains of canvas and mica to keep out the elements.

Though these cabs were new the pickup boxes used were carryover from the Model T. These trucks didn't just look new, they were new. They featured

a new body, new engine, new transmission, new frames and new wheels. Their new 4 cylinder engines displaced some 200 cubic inches and produced some 40 horsepower at 2200 RPM. Backing up these new engines were new three speed manual transmissions that used a standard "H" shifting pattern. There were a lot easier to use than the



The squared off lines and small rear window of this Closed Cab pickup identify it as an early 1928 or 1929 Model A. (Photo Paul McLaughlin)

three pedal planetary transmissions that were used in all the Model T's.

Standard equipment on these new Model A's included a 6 volt starting system, left

fender mounted spare tire, a 4 wheel mechanical braking system, tool kit, hand-operated windshield wiper and a comfortable seat covered in artificial leather.

In August of 1928 the Closed Cab version of the pickup was released to the public. This truck featured an all steel cab with roll-up windows in its doors. Both vehicles were available in a Black or Rock Moss Green color. Fenders, running boards, wheels, headlight buckets and the radiator grille surround were painted black on these vehicles.

Ford produced some 26,171 pickups in 1928 before the model year ended.

In February of 1929 Ford released their 1929 Model A pickups with minor changes over their 1928 counterparts. One of those changes involved adding exterior door handles to Open Cab models while the other change had Ford offering more exterior color choices to pickup buyers this year. All of these changes appealed to buyers as Ford's Model A pickup production this year jumped to 77,900 units.



This early model, 1928-1929, Open Cab Model A Pickup has been dressed up by using a car type nickel-plated grille surround and headlights. The red wheels and while wall tires also add a nice touch. (Photo: Paul McLaughlin)

The 1930 model year saw Ford redesigning all their Model A's including the pickups. This redesign involved smoothing out cowl panels, restyled fenders, raising the hood line and using a taller, thinner radiator. Closed Cab pickup models got a sun visor mounted over the windshield, a windshield that could be pivoted out from the bottom for cab ventilation, a new soft roof panel and a cab that featured more rounded corners on its backside. Open Cab variants got a new top that could be removed and once removed the windshield could be laid down flat on top of the cowl. In addition to these changes Ford even offered more color choices this year but all these changes couldn't keep pickup production from dropping to 48,378

model units in this Depression year.

For 1931, the last year of Model A production, Ford offered a larger pickup box (22.2 cubic feet versus 16.8) and even more exterior color choices to buyers. They also offered a limited production pickup for people who wanted something special. This pickup was called the Model A Deluxe Pickup and it featured a unique, slab-sided pickup box that bolted to the back of a Closed Cab making the two separate pieces look like one. Chrome plated brass rails were added to the top of the bed sides to provide a distinctive look to these trucks. In addition all the nickel plated trim



This 1931 Closed Cab Model A Pickup shows its redesigned cowl panel, sun visor, and rounded corner cab backside in this side profile shot. The truck was also dressed up by using a nickel plated grille surround and headlights as used on the Model A car. Apple Green painted wheels added a nice contrast. (Photo: Paul McLaughlin)

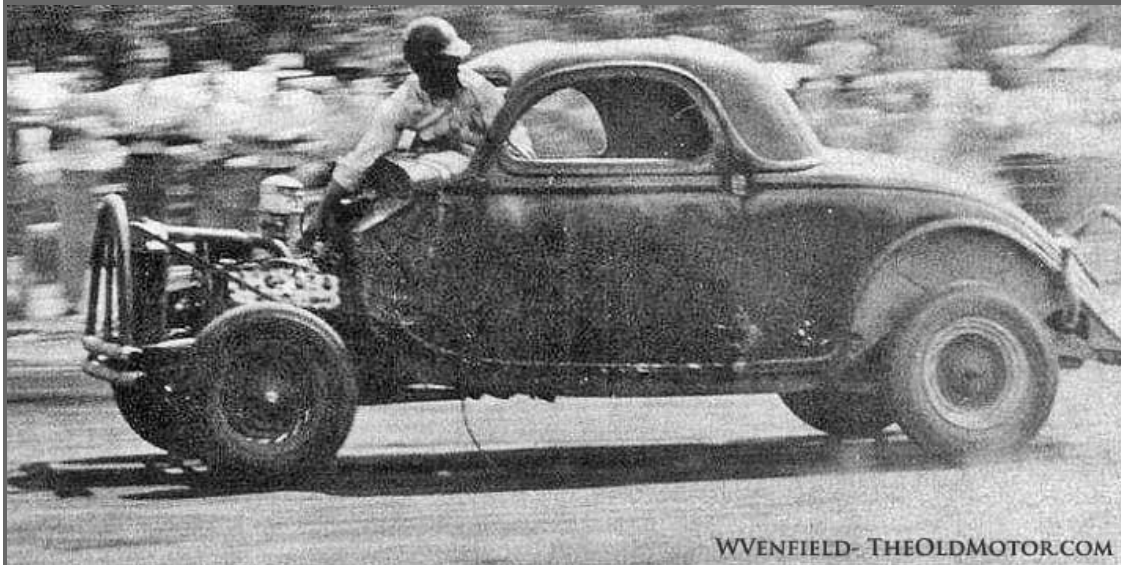
elements found on the Deluxe Model A cars were also used on these trucks. Most of them were painted white with black fenders and top panel. Only 293 of them were produced and about 100 of them were used by General Electric technicians who worked on refrigerators. Ford also offered a Canopy Top (Type 65-A) Option for their pickups for those people who wanted a covered pickup to use in their businesses.

Ford produced 29,545 pickups before they stopped production of their 1931 Model A trucks in March of 1932. That brought to a close the Model A Era which saw Ford produce some of their most popular vehicles build during the past century. Vehicles that had such an impact they are still popular today almost 70 years after the last one was produced in the United States.



The first two-way conversation across the Atlantic. On January 7, 1927

Necessity is the Mother of Invention



On June 4, 1950 Vittie Cothron was running his 1936 Ford Coupe in a stock car race when the accelerator linkage fell off on the last lap. Vittie apparently was a quick-thinking individual, who stood up, operated the carburetor with his right hand and steered the car with his left hand to a third place finish. No other details are known about the event. Photo via [wvenfield](#) on *the H.A.M.B.* and the Old Motor

FOR SALE

FOR SALE: 1931 Deluxe Roadster, owned by the late Robert (Bob) Jackson, River Cities Club. Restored and a trophy winner many times. Nothing needed for pleasant miles of touring. All you need is the key. Contact Betty Jackson: jonanabray@aol.com

706-329-8935 (c) 334-298-3935

Located in Seale, AL

